



Village of

Little Chute

NEWSLETTER

Fall 2011

INSIDE THIS NEWSLETTER

How to Obtain Voter Photo ID Page 2
 Meet the New Finance Director Page 2
 Delinquent Utility Bills Page 2
 LC Garden Club Page 3
 Dutch Artists Mural Page 3
 Park, Rec., Forestry News Page 4
 Park Naming Contest Page 5
 Cheese Fest Donations Page 6
 Library Notes Page 7
 Fox Valley Metro News Page 8
 Take Back Initiative Page 8
 Citizen's Police Academy Page 9
 Neighborhood Watch Page 10
 Trick or Treat Hours Page 11
 LC Fire Department Reminders ... Page 11
 New Yard Waste Drop Off Site ... Page 12
 Clean Sweep Program Page 13
 E-Waste Recycling Page 13
 Mailbox Requirements Page 14
 Brush Pickup Policy Page 14
 Hydrant Flushing Dates Page 15
 Snow Removal Policy Page 15

NEWSLETTER INSERT

STORM WATER PROTECTION
 LEAVE YOUR LEAVES ON LAND
 &
 FISH DON'T SWIM IN CHLORINE

**CHECK OUT THE CONTEST TO
 NAME LITTLE CHUTE'S NEWEST
 PARK ON PAGE 5**

WISCONSIN'S NEW VOTER PHOTO ID LAW

Wisconsin Law requires voters to show an acceptable photo ID to vote starting with the 2012 February Primary. An acceptable photo ID will be **required** before receiving a ballot at the 2012 February Primary and all subsequent elections. The new voter photo ID law also **requires** voters to sign their name on the poll list before receiving a ballot.

What is an acceptable ID?

- A Wisconsin DOT-issued driver license, even if driving privileges are revoked or suspended
- A Wisconsin DOT-issued identification card
- A Military ID card issued by a U.S. uniformed service
- U.S. passport
- A certificate of naturalization that was issued not earlier than two years before the date of an election at which it is presented
- An unexpired driving receipt issued by Wisconsin DOT
- An unexpired identification card receipt issued by Wisconsin DOT
- An identification card issued by a federally recognized Indian tribe in Wisconsin
- An unexpired identification card issued by a Wisconsin-accredited university or college that contains the following:

Date of issuance; Signature of student; Expiration date not later than two years after date of issuance. Student must also provide proof of enrollment with ID.

An acceptable photo ID is not required to have a current address. However, proof of your current residence is required if you are registering to vote.

(CONTINUED ON PAGE 2)

(NEW VOTER ID LAW CONTINUED)

How do I get a free photo ID to vote?

Wisconsin law requires the Department of Transportation to provide free ID cards to any individual who will be at least 18 years of age on the date of the next election and who requests a free ID for the purpose of voting. The regular fee is \$28.

Due to the need to provide a birth certificate and other documents to receive a DOT-issued ID, individuals should start the process of obtaining a statutory identification well in advance of the 2012 elections.

① For detailed information about the Voter Photo ID law, please visit the Government Accountability Board website: <http://gab.wi.gov> or call 1-866-VOTE-WIS or contact the G.A.B. Help Desk at 608-261-2028 or TTY 800-947-3529.

DELINQUENT UTILITY BILLS

Customers are reminded to clear up any delinquent utility balances by October. The Little Chute portion of the Kaukauna Utility (KU) monthly bill is made up of water, sewer, storm water, and refuse charges. Property owners of both owner occupied and rental property are notified in October if there is an unpaid balance. Under state statute, any delinquent balances are added to the owner's December tax bill if they are not paid in October. If the unpaid balance must be added to the tax bill, then an automatic 10% penalty is added to the balance. Please make every effort to pay as soon as possible if you find yourself in this situation. Payments are made to KU by mail, in person, or by credit card. Contact the KU office if you have any questions.

① A customer may verify their account balance online by using a password protected account which only they have access to at www.kaukaunautilities.com, or call the KU office directly at 766-5721. During the year, it is recommended for owners to periodically monitor the status of their rental property utility accounts by calling the KU office.

VILLAGE WELCOMES NEW FINANCE DIRECTOR TERI MATHENY TO ITS STAFF



The Village Board and staff are pleased to welcome our new Finance Director, Teri Matheny to the Village staff. Teri grew up in Sheboygan and graduated from Carroll University in Waukesha with a degree in accounting.

Teri served as a former Municipal Clerk and Finance Director for the Village of Pleasant Prairie and as Municipal Accountant for the Village of Bellevue. Teri also worked in public accounting for Schenck Business Solutions and Price Waterhouse.

Teri's husband, Bob, is a member of the City of Green Bay Police Department and they have four children ages 12 to 18. Teri's time away from work is spent enjoying camping, reading, attending their children's activities and supporting the Green Bay Packers. She also is actively involved with the Girl Scouts and as a religious education teacher at their church.

Teri is excited about her new management responsibilities with the Village of Little Chute and with the challenge of working on the Village's 2012 Budget.

LITTLE CHUTE KIWANIS ANNUAL CHRISTMAS PARADE WILL BE HELD ON MONDAY, NOVEMBER 28th 6:30 P.M. DOWNTOWN ON MAIN STREET



LITTLE CHUTE MURAL HIGHLIGHTS DUTCH ARTISTS



(Rembrandt, Van Gogh, Mondrian)

Have you taken the opportunity to view the beautifully renovated pitcher's wall at Legion Park? The wall, now renamed the "Mirror of the Master's Work" is adorned with paintings of Rembrandt, Vincent Van Gogh, and Piet Mondrian.



(Rembrandt, Van Gogh)

The inspiration for painting the wall as a mural of Dutch Artists came from Hollie Hammen. Hollie approached Little Chute Parks Director, Tom Flick, with the idea and the Village supported the idea and provided the paint for the project. Hollie got together with Little Chute High School Art Student, Alex Van Keulen and Little Chute High School graduate, Haley Weyers to create the mural. Several others were also involved with the background painting. The mural is six feet high and 60 feet long.



(Van Gogh, Mondrian)

The Village thanks Hollie, Alex, Haley and everyone involved with creating this beautiful mural for the Village. Please stop by and view this mural that is located in Legion Park, near Hans Parkway.

THANK YOU TO THE LITTLE CHUTE GARDEN CLUB MEMBERS

The Little Chute Garden Club members did an outstanding job this year with caring for the Village flower pots and gardens that are located throughout the Village. It is volunteers like the Garden Club members that help to make our community beautiful for our residents, businesses, and visitors.

Please consider helping out the Garden Club, they are looking for help with watering planters next summer. ☺ If you are interested in finding out more about the Little Chute Garden Club or assisting with watering the planters and gardens, please contact Ellen Mischler at 788-4679 or email:

Luminapump@aol.com.



PARKS, RECREATION, AND FORESTRY DEPARTMENT NEWS

PARK SHELTER RENTALS

The current policy on park shelter rentals allows the public to reserve shelters up to one year in advance. Park shelters can be reserved for use from May through September by calling the Park & Rec Dept at 788-7390. Information on park shelters (shelter choices, locations, pictures, rental fees) is located on the village website at www.littlechutewi.org/parks.

SUCCESSFUL YOUTH PROGRAMS

The 2011 Summer Programs have completed another successful year. We contribute the success of the programs to the fine staff of college and high school students who worked this summer. A special thanks to staff coordinators Kim Hooyman, Teddy Van Thiel, Phil Hietpas, Kelsey Hooyman, Taylor Kloehn, Taylor Schepp, Matt Van Thiel, and Matt Schepp.

END OF YEAR TOT LOT CARNIVAL

Thanks to numerous sponsors, the end-of-year Tot Lot Carnival on Wednesday, August 17, was a terrific success that was truly enjoyed by the kids. The carnival was held outdoors at Legion Park, and included various games, inflatables, prizes, a dunk tank, balloon creations, kiddie express ride, and a DJ.

A special **THANK YOU** to the generous sponsors of this year's event: *A&W Restaurant, Applebees, Appleton YMCA, ATCAM, Badger Sports Park, Baker's Outlet, BLC Community Bank, Bill's Auto, Breadsmith, Building for Kids, Building Services Group, Butch's Pizza, Capital Credit Union, Cedar Creek, Checkered Flag Sports Bar, Cherrylands Best, Chili's Grill & Bar, Coenen's Auto Tech, Createch, Culvers, D&M Flooring America, Darboy Club, Dave Wittmann Insurance, DJ Video & Tanning, Domino's Pizza, Don Hietpas & Sons, East Wisconsin Savings Bank, Ebben & Pynenberg, EZ Glide Garage Doors, Family Video, Fanci That Beauty Salon, Fazoli's Restaurant, Fox Valley Tool & Die, Flying Dutchman, Fox Valley Metro Police Dept., Great Lakes Mechanical, Hardware*

Hank, Heart of the Valley YMCA, Hill Top Bakery, Hollanders, Ideal Beauty Shop, JP Graphics, King's Variety, Kiwanis Club of Little Chute, Landreman's Family Restaurant, Lappen Security Products, Larry's Piggly Wiggly, Lee's Contracting/Fabricating, Lunda Construction, Main Event, Mary's Family Restaurant, Menn Law Firm, Old Country Buffet, Optometric Services, Perkins Family Restaurant, Player's Choice, Play It Again Sports, Pop In Again, Robinson Floral, Rusch's Kimberly Bowl, Sam's Club, Seth's Coffee, Shear Madnezz Salon, Simon's Specialty Cheese, Subway of Little Chute, Super Bowl, Tanner's Grill & Bar, The Exclusive Company, Unison Credit Union, Uno Chicago Grill, Utility Sales & Service, Valley Grinding & Manufacturing, Valley Liquor, Van Lieshout Law Office, Van Vreede's, Van Zeeland Nursery & Landscape, Victor Allens Coffee, Village Lanes, VVH Inc., Walgreens, Wild Air Play Zone, and Wisconsin Timber Rattlers.

SENIOR ACTIVITIES PROGRAM

Are you looking for a place to meet new people or have some fun with your friends? Then come to the Senior Activities Program held in room N2 at the Gerard H. Van Hoof Memorial Library/Civic Center on Wednesdays



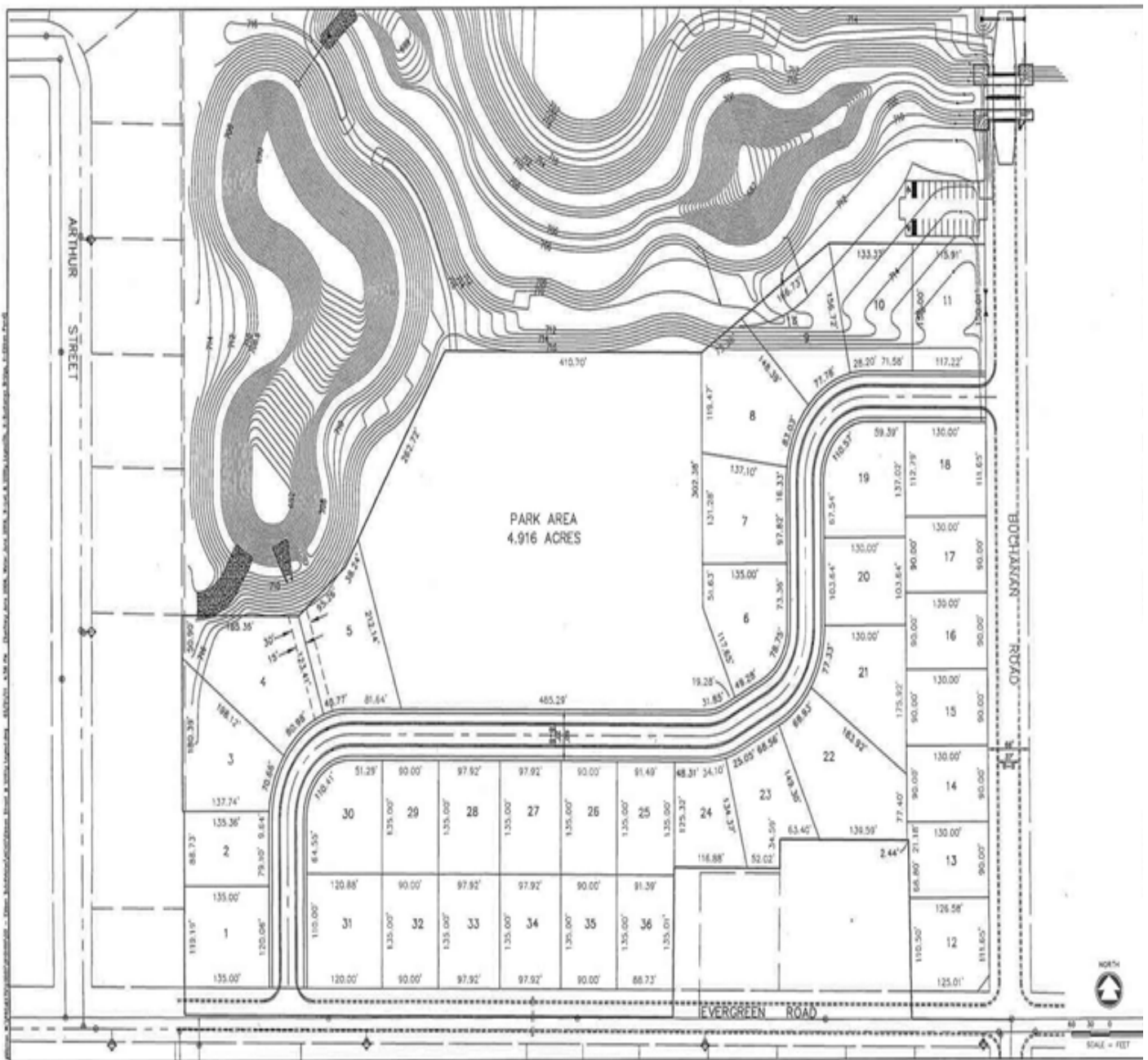
from 1:00 p.m. to 3:00 p.m. & on various Fridays from 1:00 p.m. to 3:00 p.m. Activities have been planned by our senior activities coordinator, Sharon Jansen, such as cards, bingo, and luncheons. The schedule of activities planned for Wednesdays and for Fridays is posted at the LC library/civic center and on the village website at www.littlechutewi.org/seniors. There is no charge for participation (unless a special activity is planned) and there is no registration necessary (except for special luncheons); just come when you can and bring someone along! The Senior Activities Program is available to Little Chute residents/taxpayers age 55 or older, and they can bring their friends too.

DEDICATED YOUTH BASEBALL/SOFTBALL COACHES

A special thank you is given to all the volunteer coaches for all their help with the youth baseball & softball programs this year. Without your help, commitment, and loyalty, our programs would not be as successful as they are!

CONTEST TO NAME LITTLE CHUTE'S NEWEST PARK

The Little Chute Park, Recreation & Forestry Dept is holding a contest to name its newest park, which is located at the northwest corner of Evergreen Drive and Buchanan Street. Interested participants should submit their idea for a park name and the reason for the name (named after a specific person, event, etc.) in 200 words or less to the Park & Rec Dept (1940 Buchanan St.) by November 15th. The person whose entry is selected as the winner for naming the newest park will receive a free 2012 family or individual season pool & slide pass.



LC COMMUNITY BAND CONCERTS

Take time to enjoy the musical entertainment of the Little Chute Community Band this fall & winter. They will have a performance at St. Paul's Home in Kaukauna at 7:00pm on Wed., Oct. 12. They will then be performing in the LC Christmas Parade on Mon., Nov. 28 (parade starts at 6:30pm). Their final performance this year will be their Christmas Concert at the LC High School at 7:00pm on Wed., Dec. 7. The public is welcome at all of their performances. The band is directed by Peter Krautkramer.

① New members are always welcome to join the band. Please contact Cathy Wall at 788-5162, Susie Hietpas at 788-5884, or Sue Van Camp at 788-1954 with any questions.



CHEESE FESTIVAL MAKES DONATIONS TO THE COMMUNITY

The 23rd Annual Great Wisconsin Cheese Festival held on June 3, 4, & 5 at Doyle Park in Little Chute was a terrific success thanks to the beautiful weather, outstanding entertainment and events, and record attendance. Profit distribution for this year's festival totals \$77,873. Since the festival's inception, a grand total of \$908,280 has been distributed back into the community. In addition, numerous non-profit groups have raised funds by operating a food booth at the festival.

A special THANK YOU goes to all the sponsors, organizations, workers, and volunteers who helped to make the festival a success. The support shown by the community has been terrific!

The Great Wisconsin Cheese Festival Board of Directors is pleased to announce the following donations will be made to the community.

- \$7,500/pedestrian bridge project from Heesakker Park to Island Park;
- \$4,000/scholarships (4 scholarships at \$1,000 each) to graduating seniors of LC residents/taxpayers;
- \$4,000/LC Parks Dept for trail benches at Heesakker Park;
- \$3,000/LC Baseball Club for the sprinkler project at Van Lieshout Park;

- \$2,500/LC Softball Club for diamond tarps;
- \$2,000/Haven of Hope Day Care for software;
- \$2,000/Fox Cities March of Dimes/March for Babies;
- \$2,000/LC Library program "1000 Books Before Kindergarten";
- \$1,000/Fox Valley Metro Police Dept. PSL Program;
- \$1,000/LC Rec Dept to sponsor 2012 Family Fun Fest children's entertainment;
- \$750/LCHS for 12th grade graduation event;
- \$750/LC Middle School for 8th grade graduation;
- \$750/LC St. John's School for 8th grade graduation;
- \$750/LC Elementary School for approved student program/needs;
- \$500/LC Pool to sponsor DJ's for two 2012 "summer soaker" events;
- \$500/LC Rec Dept. to sponsor 2012 Youth Carnival entertainment;
- \$500/sponsor the 2011 Kermis Dutch Festival;
- \$250/LC Rec Dept to help fund the 2012 Every Kid Counts financial assistance program;
- \$200/Outagamie County 4-H Leaders Recognition Dinner;
- \$22,250 was set aside for future projects.

Additionally, \$8,966 was paid to the LC Jaycees and the LC Kiwanis Club. Festival Chair Al Zierler states, "The Kiwanis and Jaycees have been part of the Great Wisconsin Cheese Festival from the very beginning and they have been instrumental in the incredible success of the event." Other organizations/clubs that received payments were the LC Baseball Club, LCHS Student Council and Basketball Club, LCHS Key Club, and the LC Girl Scouts for working the admission gate, wristband booth, and cheese tasting area.



Cheese Festival Board Chair Al Zierler presents checks to the LC Kiwanis Treasurer Les Winius & LC Jaycees President Craig Spierings

Mark your calendars, the 2012 Cheese Festival will be held on June 1, 2, & 3.

GERARD H. VAN HOOF MEMORIAL LIBRARY/CIVIC CENTER NOTES

The Library Doors Are Open for You

The library is proud to announce our new electronic door openers! The openers have been installed at the entries closest to the parking lots near the library's entrance. We hope they will make the library more accessible to all visitors. This project was supported by Library Services and Technology Act (LSTA) funds, awarded to the Wisconsin Department of Public Instruction by the Federal Institute of Museum and Library Services.

Sometimes it's hard to find just the right book, one that just pulls you in and won't let you go until you suddenly realize hours have passed, the dog hasn't been fed, and the world has gone to sleep around you. Books fill a need, for adventure or romance, for escape or for learning, and finding the one that will fit your mood or desire can be a tricky thing. Thankfully, the library has some great tools you can try to help you zero in on that next favorite book.

The InfoSoup Readers' Page is a great starting point, available at <http://info.infosoup.org/books.asp>, it includes links to book recommendations and topical book lists developed by InfoSoup Librarians, award winning and notable books, read feeds, reviews and interviews, and more. It's a wonderful starting point for book lovers to explore what's happening in the literary world.

The Readers' Page also includes a link to *NoveList*, a great resource for fiction readers which provides recommended reads, read-alike lists, reviews, discussion guides, and more. Check their genre lists or enter the title of your favorite book to find similar titles you might want to try. You can zero in on story features, such as genre, storyline, page, tone, style, subject, and location so the recommended reads really fit your interests. It's a fantastic tool that is free, thanks to BadgerLink, a statewide service provided by the Department of Public Instruction. Just enter your library card number and PIN if you're searching

NoveList from home, and you have a wealth of reading resources at your fingertips. Kids and parents can check out the Family Reads page at <http://info.infosoup.org/kids.asp>. This page is similar to the Readers' Page, except it focuses on books, booklists, and resources for kids. It includes *Books to Hoot About* (<http://read.infosoup.org/kids>), a blog written collectively by InfoSoup Librarians and InfoSoup users. See what people have been reading and contribute your own review to share.

And we wouldn't want to leave out our teens! Explore the Teen Reads page at <http://info.infosoup.org/teen.asp>, and you'll find book lists, award winners, homework help, series & sequels, graphic novel lists, and more. Contribute your reviews to *The Book Blog* (<http://read.infosoup.org/teens>) while you're there, and find out what other teens and librarians have been reading lately.

InfoSoup also provides BookLetters, which are annotated lists of new or noteworthy books covering a wide variety of subjects and genres. Check out the available lists at <http://info.infosoup.org/bookletters/> each month to see what's new. You can subscribe to the lists of your choice and have them sent to you via email.

Sign up for the library's online book clubs! Go to our web site at <http://www.kimlit.org/> and click on the "Read Books in Your Email" icon in the column to the right. Enter your email address and select which book clubs you would like to follow, then every day, Monday through Friday, you'll receive a five-minute selection from a chapter of a book in the genre(s) you selected. By the end of the week, you'll have read 2-3 chapters! Each Monday a new book begins. We purchase copies of most of the online book club selections, so if you start a book via email and want to continue, you can come to the library and check it out. It's a great way to discover new authors and get a taste of a book before you commit to taking it home.

Be sure to check the library's web site at <http://www.kimlit.org/> to watch for our upcoming events, library news and library hours or find us on Facebook at <http://www.facebook.com/KimberlyLittleChutePublicLibrary>.
Happy Reading!



Fox Valley Metro Police Department
“Partnerships in Policing”

Guiding Principles

Compassion

Respect and empathy for each individual’s dignity through listening and understanding.

Integrity

Bound by the Law Enforcement Code of Ethics serving with courage and fairness. We are dedicated to our oath to uphold the public trust.

Professionalism

Committed to providing the highest quality of police service and leadership to the community with dedication and objectivity.

POLICE DEPARTMENT CONSOLIDATION

Effective July 1st, 2011, the Fox Valley Metro Police Department officially merged with the Combined Locks Police Department. The consolidation efforts are ongoing.

The Fox Valley Metro Police Department will utilize both the current facility on McKinley Avenue in Little Chute as well as a portion of the Combined Locks Civic Center on Wallace Street in Combined Locks. The current Little Chute facility will be the department’s headquarters and will continue to be used for the daily operation of business. The Combined Locks facility will be used for storage as well as have additional workstations and interview rooms for the Officers’ use.

In the beginning portion of August, 2011, several construction bids were received for the renovation of the police department facilities. A contractor was

selected by the Village Boards and the renovation is underway.

The renovation is scheduled to be completed in three stages. The first stage is the remodeling of the Combined Locks facility. The second and third stage will be the remodeling of the downstairs and upstairs of the Little Chute facility.

NATIONAL TAKE BACK INITIATIVE

The Fox Valley Metro Police Department partnered with the Combined Locks Police Department in April, 2011 to participate in the National Take Back Initiative Day. The Police Departments hosted a drop location for medications at the Combined Locks Civic Center.



Nationwide, the National Take Back Initiative took in more than 376,593 pounds (188 tons) of unwanted or expired medications for safe and proper disposal at the 5,361 take-back sites that were available in all 50 states. This is 55 percent more than the 242,000 pounds (121 tons) the public brought in during the September, 2010 event.

The Fox Valley Metro Police Department will again be participating in another Take Back Initiative Event set for **October 29, 2011**. The event will take place from **10:00AM – 2:00PM** at the **Village of Kimberly Municipal Complex**. This is a great opportunity for those who missed the previous events or who have subsequently accumulated unwanted, unused prescription drugs, to safely dispose of them.

**FOX VALLEY METRO
POLICE DEPARTMENT**
200 W. McKinley Avenue
NEW OFFICE HOURS
MONDAY THROUGH FRIDAY
7:30 A.M. TO 5:30 P.M.



FOX CITIES VICTIM CRISIS RESPONSE TEAM

The Fox Cities Victim Crisis Response Team is a volunteer organization designed to assist

local police departments in providing support services to victims, witnesses, and family members of crime victims. It provides immediate comfort, support and referral information for those who have been victimized by crime or involved in a critical event or trauma.

****Volunteers Needed****

The Fox Cities Victim Crisis Response Team is in need of volunteers to assist the Fox Cities law enforcement agencies of Fox Valley Metro, Grand Chute, Appleton, Town of Menasha, Menasha, and Neenah in providing “on-scene” advocacy, support and assistance to members of the community and their families who are victims of crime or who are in crisis.

① Anyone who is interested contact Beth at 886-6044 or 209-9153 or e-mail Emontou@ci.neenah.wi.us.



TOP BACK TO SCHOOL SAFETY TIPS

Here are some simple reminders for drivers:

- Slow down and be especially alert in the residential neighborhoods and school zones
- Take extra time to look for kids at intersections, medians and on curbs
- Enter and exit driveways and alleys slowly and carefully
- Watch for children on and near the road in the morning and after school hours
- Reduce any distractions inside your car so you can concentrate on the road and your

surroundings. Put down your phone and don't talk or text while driving

Reminders for your kids:

- They should cross the street with an adult until they are at least 10 years old
- Cross the street at corners, using traffic signals and crosswalks
- Never run out into the streets or cross in between parked cars
- Make sure they always walk in front of the bus where the driver can see them

CITIZEN'S POLICE ACADEMY

The Fox Valley Metro Police Department will be hosting a Fall Citizen's Police Academy. The Academy is scheduled to begin in October, 2011 and run for approximately 6 weeks.

The Citizen's Police Academy

- Provides the Citizen and Police Officer a chance to meet and talk about the law enforcement profession as performed at the Fox Valley Metro Police Department. This can aid the citizen in understanding not only what the police do but how they do it and why. It also gives the Officers a chance to meet their customers and find out what services they expect and to what standard.
- Citizens have a chance to ride with an on-duty police officer.
- Discuss and learn about such topics as Police School Liaison Program, Investigations, Traffic law, Legal Issues, Police Weapons, OWI and much more.

The Citizen's Police Academy is open to individuals who are at least 18 years old with no criminal record. Preference will be given to people who live or work in Little Chute, Combined Locks, Kimberly or the Kimberly Area School District.

(CONTINUED ON PAGE 10)

(CITIZEN'S POLICE ACADEMY CONTINUED FROM PAGE 9)

There is no cost for this program.

To enroll or get information on the Citizen's Police Academy, stop in or call the Fox Valley Metro Police Department (920) 788-7505 or email Community Support Officer Jeff Steeber, at jeff.steeber@fvmpd.org.



NOTIFICATION PROGRAM

The Fox Valley Metro Police Department utilizes a new communications service that allows them to send important, valuable community information directly to residents using the latest technology.

The Nixle Community Information Service allows us to create and publish messages to be delivered to subscribed residents instantly via cell phone text message and/or email. Notifications can also be accessed online at Nixle's web site at www.nixle.com.

Messages may include current crime trends, local areas of concern, traffic concerns as well as other relevant safety and community event information.

The service is reliable and free for our citizens to use.

The messages can be sent specifically to residents registered within a ¼ mile radius, giving them the opportunity to receive trustworthy information relevant only to their neighborhood. Residents decide from which local agencies they want to receive information. Subscribers can also choose the way in which alerts are received, whether it is by email, text message, or over the web.

There is NO spam and no hidden cost. Standard text messaging rates do apply.

Nixle builds on the foundations of other public-to-public communication services, such as Twitter, Facebook, and MySpace, but adds a key component: security. When citizens receive information from our agency via Nixle, they know it can be trusted.

Residents of Little Chute and Kimberly and those in neighboring communities can immediately begin receiving pertinent information via text message, email, and web by registering at www.nixle.com.

UNSOLVED CRIMES



Fox Valley Metro Police Department is seeking public assistance in resolving unsolved crimes.

Individuals providing information on crimes in our area can remain anonymous and receive a reward for the successful capture of suspected criminals by calling Fox Valley Metro Police Department at 920-788-7505 or call Crime Stoppers at 920-788-9090. E-mail tips@stopcrimenow.org.

NEIGHBORHOOD WATCH

Neighborhood Watch is a crime prevention program that enlists the active participation of citizens, in cooperation with law enforcement, to reduce residential crime. If you are interested in participating or starting a Neighborhood Watch Program in your neighborhood, please call Community Support Officer, Jeff Steeber, at Fox Valley Metro Police Department 788-7505 or email at jeff.steeber@fvmpd.org



AVAILABLE PROGRAMS

Fox Valley Metro Police Department provides numerous programs for citizens. These include:

- Cellular Phone Loan out
- Citizens Police Academy
- Citizen Ride-along (Ride along with an Officer for a day)
- Engraver Loan out
- Fingerprinting (only available to citizens who live or work in the village)
- Key Box Program
- Neighborhood Watch
- Residential Security Program (Post Card)
- Vacation House Checks
- "The Club" Loan Out

Also, if your civic group or business would like an officer to speak to them on any police related subject, officers are available to make presentations.



**TRICK OR TREAT HOURS
MONDAY,
OCTOBER 31st
5 P.M. TO 7 P.M.**

FOX VALLEY METRO WEBSITE

Check out the Fox Valley Metro Police Dept's new and improved website at www.foxvalleymetro.org for information on available programs and upcoming events. Some features may not yet be operational as it is currently being worked on.

REMINDERS FROM THE LITTLE CHUTE VOLUNTEER FIRE DEPARTMENT



Reporting a Fire! After calling 911, if the person making the 911 call is present at the address that the fire is located at, please leave a light on or be present in front of the structure to provide directions to the Fire Department. Doing this will provide great assistance to the Fire Department. This assistance is very important if the fire is located in an apartment complex or larger structure.

**DAYLIGHT SAVINGS TIME ENDS
AT 2 A.M. ON NOVEMBER 6, 2011**



**REMEMBER
TO SET YOUR CLOCKS BACK ONE HOUR AND
CHANGE THE BATTERIES IN YOUR SMOKE
AND CARBON MONOXIDE DETECTORS**

**VILLAGE OFFICES
will be Closed on
Thursday, November 24 &
Friday, November 25, 2011**



NEWS FROM THE DEPARTMENT OF PUBLIC WORKS

NEW YARD WASTE DROP-OFF SITE

The new yard waste drop-off site is now available for use by Village residents that purchase a \$20.00 access control card for 2011. The site is available 7 days a week from sun up to sun down. Once it snows, all 2011 cards will be de-activated. In the spring of 2012, residents may bring back their card to the Municipal Services Building at 1940 Buchanan Street, pay a \$5.00 fee and have their card re-activated. Lost or damaged cards can be replaced for a \$10.00 fee.

NOTE: Only yard waste (garden debris, small hedge trimmings that are too small to bundle, leaves, grass clippings, and lawn rakings) is allowed to be dropped off at this site. NO brush, garbage, recycling, etc. may be dropped off at the site.

Since the new site opened, we have already had violations of brush dropped off. The Department of Public Works is monitoring the site through the video cameras and residents who don't follow these rules will have their access control card de-activated, and will be charged another \$20.00 in 2012 to re-activate their card.

Dates to remember for the fall of 2011:

- Since the new yard waste drop off site is now available (accessible only with the purchase of a \$20.00 access control card), the Village will no longer have free pickup of bagged yard waste, and only residents who have purchased an access control card will be allowed to drop off yard waste at the new site.
- *Pickup of bagged yard waste (with a \$2.00 yard waste sticker attached) ended on Sept. 21. Yard waste should now be mixed with leaves and grass*

and put loose at the curb for the vac to pick up, this process will continue until November 1. Tomato plants and other vine-like plants should be cut into 1' pieces and mixed with the loose leaves and yard waste at the curb.

- Do not place any sticks or branches more than 1 foot in length at the curb with the loose grass and yard waste. Sticks or branches that are more than 1 foot in length are considered brush, not yard waste. 📞 Please call the Municipal Services Building at 788-7390 to report brush placed at the curb for the chipper to pick up.
- Large non-metal items ONLY will be picked up on your LAST garbage pickup day of every month.
- Large metal items are only picked up every 3 months, and the next pickup for large metal items will be your LAST garbage pickup day in the month of October.
- Hydrant flushing will take place during the weeks of October 3-October 6 and October 10-October 13.
- Thursday's, November 24, garbage route will be picked up on Wednesday, November 23.
- Friday's, November 25, business garbage route will be picked up on Monday, November 28.
- Friday's, December 23, business garbage route will be picked up on Thursday, December 22.
- Monday's, December 26, garbage route will be picked up on Tuesday, December 27.
- Monday's, January 2, 2012, garbage route will be picked up on Friday, December 30.
- Recycling days during the week of December 26-30 – Monday will be on Tuesday, Tuesday will be on Wednesday, Wednesday will be on Thursday, and Thursday will be on Friday.
- **Extra bagged garbage ("overflow" that doesn't fit inside of your garbage container) will be picked up on your LAST garbage pickup day in December.**

CLEAN SWEEP PROGRAM (Hazardous Waste)

Residents may dispose of hazardous waste (by appointment only) on Wednesday, October 5, or Saturday, October 15, 2011 at the Outagamie County Department of Solid Waste at 1419 Holland Road, Appleton. ☎ Please call 920-832-5277 Option 3 or go online at RecycleMoreOutagamie.org to set up an appointment.

The following materials are acceptable at the Clean Sweep Program: gasoline & fuel additives, brake & starter fluid, transmission fluid, engine oil & anti-freeze, vehicle batteries, solvents & turpentine, varnish/stain, drain & oven cleaners, pool chemicals, household cleaners, polishes & aerosols, herbicides & insecticides, fungicides, weed killer, poisons, oil & lead paints, paint thinners/ strippers, spray paints/adhesives, wood preservatives, kerosene, and household batteries.

A REMINDER - SUMP PUMP DISCHARGE

From NOVEMBER 15 THROUGH APRIL 15 of each year no sump pump discharge shall be allowed to flow on or across a sidewalk or public street or public right-of-way within the Village. All sump pump discharge shall be directed to flow to the backyard of the property. Any property owner who is in violation shall be fined. At no time may a sump pump discharge into the sanitary sewer.

STORM DRAINAGE PROBLEM AREAS

For those areas with storm water flooding problems, one thing that would assist with reducing the water amount that does run through our sewers would be to disconnect downspouts from the storm lateral.

By having downspouts hooked directly to lateral lines or mini sewer lines, the water is traveling in a faster mode, thereby, causing backups and flooding situations. Contrary to what you probably have been told over the years, mini-sewers with laterals are not designed to handle downspouts, only sump pumps. By placing the water back on your lawn, it lengthens the time for the water to reach the street and then the catch basin, thus, giving the storm sewers more time to catch up with the flow. It also allows for infiltration into the soil, thereby, reducing the amount of water entering the storm sewer.

E-WASTE RECYCLING

(computer monitors, TV's, printers, towers, copiers, fax machines, DVD's, VCR's, keyboards, telephones, and cell phones)

Since September 1, 2010 the Village crew no longer picks up electronics curbside because according to Wisconsin's electronics recycling law, disposing of electronics in the landfill is banned.

The Village crew will be looking for hidden e-waste in residents' garbage containers, and will remove them and not pick them up. **The Village will have zero tolerance with hidden e-waste**, and residents will receive a citation if we find electronics inside of their garbage container. If hidden e-waste is found in the waste stream, it could result in higher sanitation fees to the residents.

If residents go to the Outagamie County Solid Waste Facility to recycle their electronics, their fees are as follows: Monitors, laptops, TV's (smaller than 32"), printers, towers, video display devices, and fax machines - \$5.00 each; DVD's, VCR's, keyboards, mice, hard drives, speakers, flash drives, modems, and cell phones – *free of charge*. TV's 32" or larger are *not* accepted. ☎ Call the Outagamie County Recycling Hotline at 1-800-501-1616 to obtain an E-waste brochure.

- Other residential E-waste collectors are listed below:
- American TV* www.americantv.com 733-1000
 - Appleton Habitat ReStore* www.AppletonReStore.org 830-8400
 - Best Buy www.bestbuy.com 738-4537/739-8319
 - Milwaukee PC 830-9477
 - Paper Valley Recyc. * www.wm.com/sony 729-5005
 - Recycle That Stuff * www.recyclethatstuff.com .. 955-3760
 - Step Industries *www.stepindustries.com 722-2345
 - Suess Electronics*www.suesselectronics.com ..733-6464
 - VanVreedes* www.vanvreedes.com 730-4477
- * Accepts 32" or larger

State hazardous waste regulations prohibit business from disposing electronics in the landfill.

- Business E-Waste Collectors are listed below:
- Appleton ReStore 920-830-8400
 - Lamp Recyclers 800-558-1166
 - Recycle That Stuff 920-955-3760
 - Step Industries 920-722-2345
 - Universal Recycling Technologies 608-754-3400

ROOTBALLS FROM SHRUBS

Rootballs are considered garbage. If the rootball is small enough to fit inside of your garbage polycart, it should go in there. If it is too big for your polycart, it should be placed curbside on your last garbage day of the month. Place it at least 4 feet away from your garbage polycart.

BRUSH PICKUP POLICY

Little Chute property owners/renters **MUST CALL IN** their property address to the Park, Rec & Forestry Dept at 788-7390 (ext. 202) to have their address added to the brush chipping list. If calling after hours, leave a message that you have brush out and include your complete street address. When the brush pickup list is sufficient enough to send out the chipping crew, they will be sent to the addresses on the list. If you don't call in your brush, you will not be picked up. If you hire a company to trim and/or take down trees on your property, they are responsible for brush removal; the Village will not pickup brush trimmed by a company you hired.

Brush Pickup Rules - Place your branches curbside with the cut ends facing the same direction; stack piles neatly. Mobile home park residents must bring their brush to the nearest Village street (streets within the mobile home parks do not belong to the village). Brush should never lie in the street or on the sidewalk. **KEEP BRUSH AS STRAIGHT AND AS LONG AS POSSIBLE.** Brush that is shorter (4 feet in length or less), thorny brush, and evergreen branches need to be bundled with string, not wire. Brush that is too short in length to bundle must be disposed of as yard waste (please see public works article on yard waste disposal for more information).

WINTER REFUSE COLLECTION



Polycarts cannot be placed on top of snowbanks. Polycarts must be placed at least 4' away from snowbanks and any other object; therefore, they should be placed in your driveway apron at the edge of the road.

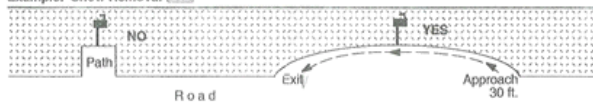
POSTAL REQUIREMENTS FOR MAILBOXES



Approaches to Curbside Mailboxes

Dear Customer,
The Postal Service depends on you to meet postal requirements regarding delivery and collection of mail to curbside boxes. *Please keep the full approach and exits to your mailbox clear, as illustrated in the examples below.* Removing trash cans, snow, vehicles, and any other objects from the area allows the carrier to deliver your mail safely and efficiently without exiting the vehicle. Your cooperation in this matter is sincerely appreciated. If you have any questions, please contact us. Thank you. Your Postmaster

Example: Snow Removal



Example: Obstructions (trash cans, vehicles, etc.)



It is the resident's responsibility to make sure that the Post Office can access your mailbox. In the winter, please clear the area around your mailbox of snow.

Please check the height and set back of your mailbox. The Village will *not* replace your mailbox if we hit it with a plow or other street maintenance equipment.

SALT BARRELS

Salt barrels are located around the Village at locations that can become slippery during the winter months. The salt and sand in these barrels can be used by motorists to get better traction for their vehicles. There will be a can inside the barrel for spreading the salt. Please return the can and put the cover on the barrel when finished. These barrels will be checked periodically, but if you should find one empty, please call the Department of Public Works at 788-7395, give us the location, and we will refill it. **The salt in the barrels is *not* intended for home or business use.**

SNOW PLOWING AND SNOW REMOVAL

Since winter is just around the corner, the Village Street Department is getting ready for snow plowing and removal. During and after a major snowstorm, the priority will be to clear and salt the primary streets first. Therefore, we would appreciate your cooperation in keeping your vehicles parked off the streets if possible. This will enable the crew to plow more efficiently. After all streets are cleared, the Village crew will strive to remove snow from the business district within 24 hours.

The snow operations policy adopted on November 28, 1990 consists of three different classes of snow emergencies. Snow emergencies will be declared by the Village President and Administrator, and will be broadcasted by the local media. The classes are as follows:

Class I

- A. No parking on any Village street from 2:00 a.m. to 6:00 a.m.
- B. No special permission granted by Police Department.
- C. Vehicles found in violation are ticketed and removed.

Class II

- A. Odd-even parking on Village streets from 6:00 a.m. to 2:00 a.m.
- B. No parking on any Village streets from 2:00 a.m. to 6:00 a.m.
- C. No special permission granted by Police Department.
- D. Vehicles found in violation are ticketed and removed.

Class III

- A. No parking on any Village street at any time until canceled.
- B. Vehicles found in violation are ticketed and removed.



**NOTICE VILLAGE WIDE
HYDRANT FLUSHING
WILL BE TAKING PLACE
OCTOBER 3rd through 6th &
OCTOBER 10th through 13th**

PRIVATE SNOW REMOVAL BY RESIDENTS



According to Sec. 40-65 snow and ice removal (**revised and adopted March 16, 2011**), of the Village of Little Chute Code of Ordinances: "The owner, occupant or person in charge of any parcel or lot which fronts upon or abuts any sidewalk shall keep said sidewalk clear of all

snow and ice. In the event of snow accumulating on said sidewalk due to natural means and/or by any other means, said **sidewalks shall be cleared of all accumulated snow and/or ice within 24 hours from the time the snow ceases to accumulate on said sidewalk. Sidewalks are to be kept clear of snow and ice to a minimum of five feet in width.**

In the event that ice has formed on any sidewalk in such a manner that it cannot be removed, the owner, occupant or person in charge of the parcel or lot which fronts upon or adjoins said sidewalk shall keep the sidewalk sprinkled with sand and/or salt to permit safe travel by pedestrians."

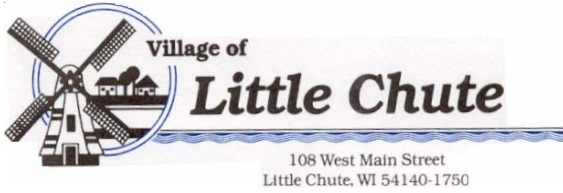
This revised ordinance does not require a written notice to be mailed prior to snow removal by the Village.

Any snow not cleared by the owner, occupant or person in charge of any parcel or lot which fronts upon or abuts any sidewalk shall be cleared by the Village and billed to the owner, lessee, or occupant.

Please check the height and set back of your mailbox. The Village will *not* replace your mailbox if we hit it with a plow or other street maintenance equipment.

Also, remember that it is unlawful to deposit any snow or ice from any private property onto any public street or alley, public or private sidewalk or public lands dedicated to public use either before or after the public streets have been plowed.

When utilizing a snow blower, be sure to direct the snow onto the grass areas of your yard and not onto the street.



**PRST STD
U.S. POSTAGE PAID
PERMIT NO. 27
Little Chute, WI
54140**

**POSTAL PATRON
ECR-WSS**

VILLAGE OF LITTLE CHUTE

Administrative Offices	108 W. Main St.	788-7380
Fox Valley Metro Police Dept.	200 W. McKinley Ave.	788-7505
Parks, Rec. & Forestry Dept.	1940 Buchanan St.	788-7390
Public Works Dept.	1940 Buchanan St.	788-7395
Gerard H. Van Hoof Library	625 Grand Ave.	788-7825
Water Plant	625 E. Evergreen Dr.	788-7522
Water Dept. On Call Emergency Number	Little Chute, WI 54140	788-7526

TRUSTEES

- Bob Berken: TrusteeBerken@littlechutewi.org
- Tammy Frassetto: TrusteeFrassetto@littlechutewi.org
- James Hietpas: TrusteeHietpas@littlechutewi.org
- Dan Mahlik: TrusteeMahlik@littlechutewi.org
- Bill Peerenboom: TrusteePeerenboom@littlechutewi.org
- Skip Smith: TrusteeSmith@littlechutewi.org

Village Hall Fax No. 788-7394
Web Site: www.littlechutewi.org

VILLAGE PRESIDENT

Michael Vanden Berg: PresidentVandenBerg@littlechutewi.org

VILLAGE ADMINISTRATOR

Charles P. Kell: chuck@littlechutewi.org

2011 MEETING SCHEDULE

OCTOBER

Wed.	5	Village Board	6 p.m.
Mon.	10	Plan Comm.	6 p.m.
Wed.	12	Comm. of the Whole	6 p.m.
Tue.	18	Library Board	4:30 p.m.
Tue.	18	Water Comm.	6 p.m.
Wed.	19	Village Board	6 p.m.
Wed.	26	Comm. of the Whole	6 p.m.

NOVEMBER

Wed.	2	Village Board	6 p.m.
Mon.	7	Fire Comm.	5:45 p.m.
Tue.	8	Police Comm.	6 p.m.
Wed.	9	Comm. of the Whole	6 p.m.
Mon.	14	Plan Comm.	6 p.m.
Tue.	15	Library Board	4:30 p.m.
Tue.	15	Water Comm.	6 p.m.
Wed.	16	Village Board	6 p.m.
Wed.	23	Comm. of the Whole	6 p.m.

DECEMBER

Tue.	5	Park Planning Comm.	6 p.m.
Wed.	7	Village Board	6 p.m.
Mon.	12	Plan Comm.	6 p.m.
Wed.	14	Comm. of the Whole	6 p.m.
Tue.	20	Library Board	4:30 p.m.
Tue.	20	Water Comm.	6 p.m.
Wed.	21	Village Board	6 p.m.
Wed.	28	Comm. of the Whole	6 p.m.

Meetings are held at the Village Hall with the exception of the Fire Commission which meets at the Safety Center and the Joint Library Board which alternates between the James J. Siebers Memorial Library and Gerard H. Van Hoof Memorial Library Design Review Board meetings will be announced. CDA - Community Development Authority meetings will be announced.

Schedule is tentative, please call ahead to confirm or check the Village's website at www.littlechutewi.org.

The *Times/Villager* is the Village's Official Newspaper for Publication of Required Legal Notices.